



sorbet

menu

nails



Soft Gel Tips



Soft Gel Tips + Gelish	R570
Soft Gel Tips + Gelish with backfill	R490

Gel Polish



	Hands	Feet
Gel Polish (Hands & Feet only)	R345	R345
Gel Polish with Ombre	R345	
Gel Polish Mini	R440	R460
Gel Polish Power	R520	R540

Gel Polish Combos

(combos to be redeemed on the same day)

Gel Polish Hands + Gel Polish Feet + 2 Soak Offs (SAVE R40)	R780
Gel Polish Hands + Gel Polish Power Pedi + Soak Off + 1 FREE Soak Off	R945
Gel Polish Power Mani + Gel Polish Power Pedi + 2 FREE Soak Offs	R1060

Manicures & Pedicures

	Hands	Feet
Quick - file, buff + paint	R195	R210
Mini - soak, file, buff + paint	R295	R310
Power - soak, file, buff, paint, exfoliation + massage	R365	R385
No Paint Power - excludes polish	R265	R335
Summer Heel - excludes pedicure*		R220
12 years and under	R120	R135

Anti-ageing

A scientifically formulated, advanced anti-aging Manicure and Pedicure. Utilizing products that are packed with growth factors and other pharmaceutical grade ingredients to ensure long lasting and effective results.

Anti-Age	R450	R495
Anti-Age + Gel Polish	R595	R645



MediPedi

A non-invasive Advanced Paramedical Foot treatment to Soften callouses, corns, cracked heels or rough dry skin on the feet, the skin is nourished underneath avoiding the recurrence of rough dry skin build up

MediPedi No Paint	R590
MediPedi + Paint	R710
MediPedi + Gelish	R795
MediPedi + EVO	R795



* Available at selected stores

Harmony Acrylic

TIPS

+ Colour	R520
+ Ombre	R550
+ Gel Polish	R570
+ Ombre Gelish	R600

OVERLAY

+ Natural / Colour	R470
+ Ombre	R490
+ Gel Polish	R520

FILL, BUFF

+ Natural	R360
+ Polish	R380
+ Ombre	R390
+ Gel Polish	R430

Sculptured Nails*

+ Colour	R580
+ Gel Polish	R610

FILL, BUFF

+ Natural	R390
+ Ombre	R420
+ Gel Polish	R450

Biogel by Bio Sculpture

BIOGEL

+ Hands Only	R435
+ Mini Mani	R570
+ Power Mani	R620
+ Feet Only	R435
+ Power Pedi	R630

TIPS

+ Gel Polish	R590
--------------	------

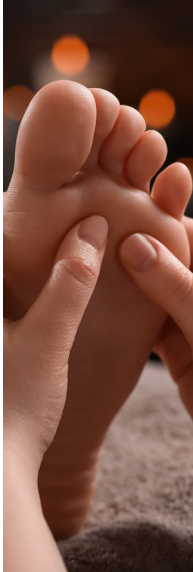
OVERLAY

+ Polish	R495
+ Gel Polish	R540

FILL, BUFF

+ Polish	R385
+ Natural	R365
+ Gel Polish	R425





Polygel

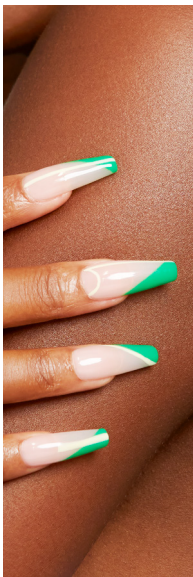
WITH GEL POLISH

+ Tips	R640
+ Overlay	R585
+ Fill & Buff	R510
+ Sculptured	R670

Soak Offs & Removals

(when doing a new set or reapplication)

Gel Polish	E-file	Acrylic	Biogel	Polygel	Gelish Soft Gel
R65	R65	R80	R75	R75	R75
				No Paint	Paint (incl)
Soak Off Gel Polish with Quick Mani				R140	R240
Soak Off Acrylic with Quick Mani				R160	R250
Soak Off Polygel with Quick Mani				R160	R250



Nail Rehab

IBX

+ Nail Repair	R140
+ Soak Off	R200

Nail Add Ons & Repairs

Nail Repair

+ Gel Polish	R45
+ Biogel	R45
+ Acrylic	R55
+ Polygel	R55
+ Soft Gel Tips	R55

Paraffin Dip

+ Hand / Feet	R160
---------------	------

Add On

+ French Paint	R45
+ Rubber Base*	R30
+ Builder Brush on Gel	R50
+ Summer Heel Express*	R160
+ Chrome Full Set	R220

NEW

Nail Art*

Nail Art (per nail) using Gelish Blooming Gel	R15
Nail Art Basic (per nail)	R15
Nail Art Sticker (per nail)	R25
Nail Art - Chrome or Rhinestone (per nail)	R25
Paint On Nail Art (per nail)	R35

* Available at selected stores





SKIN
facia



dermalogica

dermalogica®

30min

60min

FREE Face Mapping (15min)

A professional, in-depth skin analysis based on your skin and lifestyle.

Discover Dermalogica

R580

A 30-minute treatment to brighten and hydrate the skin.

Sorbet Exclusive

R890

Advanced exfoliation and a vitamin-rich masque to smooth, and regenerate skin leaving it with healthy glow. This treatment includes a 10-minute stress-relieving full back and shoulder massage.

TARGETED TREATMENTS:

Pro Bright

R950

Treats dark spots (dark marks, melasma and sun damage). Best to be booked as a programme of 3 to 6 treatments.

Pro Clear

R950

Treats breakout-prone skin and is ideal for oily/ congested skin that needs extractions. Best to be booked as a programme of 3 to 6 treatments.

Pro Firm

R950

Skin resurfacing to help revitalize and smooth the skin, while incorporating advanced techniques to firm and tone.

Pro Calm

R950

Hydrate, balance and restore the skin to treat skin irritation and reduce sensitivity.

Add on

Retinol Accelerator (10 min)

R150

Add Retinol Accelerator to boost skin's renewal process and trigger light to medium controlled flaking post treatment for enhanced results.

PEELS:

30min

60min

Ultra Bright Peel

R770

30-minute fast-acting peel targeting hyperpigmentation.

Power Clear Peel

R770

30-minute fast-acting peel targeting breakout-prone skin.

Advanced Renewal Peel

R770

30-minute fast-acting peel targeting ageing.

ADVANCED TREATMENT:

Dermalogica Pro Microneedling

R1800

This minimally-invasive treatment uses the most advanced techniques to target dark spots, wrinkles, and pores.

DMK*

DMK

Danné Montague-King®

DMK Advanced Paramedical Skin Revision protocols and peels to encourage optimum results

60min

90min

Hydrating Infusion Treatment

R610

Increase hydration and restore the skins natural water levels for a healthy brighter complexion.

Acu Klenz Treatment

R650

A purifying treatment to clear away bacteria and reduce the excess oils that lead to breakouts and congestion

PEELS:

DMK Oxygen Glow Enzyme Treatment

R1030

Increases oxygenation and nutrient supply to the skin. Great for acne, ageing and pigmentation.

Rapid Exfoliation Enzyme Treatment

R815

Gently removes dead skin cells and debris to improve the appearance of dull, course skin for a radiant complexion

* Available at selected stores



	45min	60min
Focus On: Frown, Eye, Texture, Even Tone & Filler	R490	
30-minute treatment to focus on targeted skin concerns.		
Essential Youth Reset		R750
Helps soften the appearance of fine lines, sun damage & sagging skin for a more youthful appearance.		
Essential Moisture Boost		R750
Helps reduce the appearance of fine lines caused by dehydration and promotes a more moisturised glow.		
Essential Comfort Calm		R750
Helps soothe and comfort sensitive and irritated skin leaving the skin feeling restored with a healthy-looking radiance.		
Essential Radiance Reveal		R750
Helps target the signs of sun-damage and pigmentation for an even-toned, radiant-looking appearance.		
Essential Vitamin Touch (Without DF machine)	R570	R760
Enjoy the relaxing power of touch that delivers essential vitamins to where skin needs them most, customized for your concern for healthy-looking beautiful skin.		
COOL PEELS:	Without DF machine	With DF machine*
Bright Recovery Cool Peel (60min)	R940	
This gentle lactic acid cool peel assists to reduce the appearance of premature ageing, fine lines and uneven skin tone as a result of excessive sun exposure.		
Deep Cleansing Cool Peel (60min)		R820
This unique method of deep cleansing the skin is gentle yet effective in helping to purify and control the appearance of congestion and breakouts.		
Youth Renew Cool Peel (60min)	R620	R760
This cool peel treatment assists to reduce the appearance of premature ageing, fine lines, sun-damage and an uneven skin complexion		
Blemish Control Cool Peel (60min)	R620	R760
This powerful cool peel treatment assists to improve the appearance of blemish-prone, distressed skin helping to unclog pores and remove surface impurities.		
Vibrant-C Micro Peel	R595	R760
A concentrated vitamin C infused peel. Proven to deliver a healthy-looking, evenly toned appearance as well as improved skin texture.		

Exuviance*

	30min	60min
Radiance Recovery	R570	R790
A treatment with a triple oxygenating blend that delivers an infusion of pure essential oxygen to detoxify and re-energise the skin to restore and reveal a youthful more luminous complexion.		
Revital Hydration	R570	R790
This potent treatment brings new life to stressed skin, designed to gently reveal new fresh cells, bringing them to the surface and giving rise to a radiant luminous complexion.		
Total Correct	R600	R1050
This unique anti-pollution treatment deeply hydrates and refills moisture reserves, strengthens skin barrier and neutralises daily environmental damage.		
PEELS:		
Balancing Treatment		R1050
This peel is ideal for skin which is prone to oiliness or breakouts, experiencing signs of ageing and uneven skin tone.		
Retinol Reveal		R1400
This advanced professional-strength peel is designed to exfoliate and improve the appearance of fine lines and wrinkles, plump and firm skin while promoting a bright, even and clear complexion. Contains soothing Bisabolol to help calm skin.		

Sorbet*



	30min	60min
Sorbet Anti-Ageing Facial		R525
Rejuvenating treatment that promotes collagen production, increase cell turnover, provide effective results to slow down ageing symptoms.		
Sorbet Deep Cleanse & Hydration Facial	R425	
Deep cleanse purifying treatment that opens the pores to reveal a clear complexion, hydrating and restoring moisture levels.		
Sorbet Brightening Facial		R565
Improves skin radiance and reduces pigmentation. Includes Dermaplaning treatment.		



Dermapenworld*

Dermapenworld™

Face (only)	R1600
This is a facial treatment that involves using a microneedling device to create controlled micro-injuries on the skin. This treatment enhances the texture of the skin by promoting scarless healing and stimulating collagen production in the treated area.	
Face + Neck	R1750
This is a treatment for the face and neck that involves using a microneedling device to create controlled micro-injuries on the skin. This method enhances the texture of the skin by promoting scarless healing and stimulating collagen production in the treated area.	
Face + Neck + Decollete	R1900
This is a treatment for the face, neck, and decollete that involves using a microneedling device to create controlled micro-injuries on the skin. This method enhances the texture of the skin by promoting scarless healing and stimulating collagen production in the treated area.	

	Add on
Uber Peel Pro	R370

Dermaplaning*

	Add on
Dermaplaning (only)	R520 R400
Dermaplaning exfoliates the skin using a surgical blade and removes facial hair.	

* Available at selected stores



wax

with benefits

Depilève Waxceutical® is target specific waxing solution that not only focuses on hair removal but aids the skin in combating specific skin concerns such as hyperpigmentation and skin rejuvenation while removing hair with minimal to no pain.

Our Soft & Bright range focuses on correcting dull skin and uneven skin tone while our DNA range focuses on deep moisturization to the skin and restoring skin elasticity.



Legs

	Anti-ageing / Brightening	Epilfree*
Half Leg	R245	R1170
Three Quarter Leg	R265	R1520
Full Leg	R315	R2170

Intimate

	Anti-ageing / Brightening	Epilfree*
Bikini	R200	R680
Brazilian	R295	R1150
Hollywood	R340	R1320

Arms

	Anti-ageing / Brightening	Epilfree*
Under Arm	R170	R570
Half Arm	R195	R770
Full Arm	R255	R1395

Face (hot wax)

	Anti-ageing / Brightening	Epilfree*
Brows	R115	R410
Lip	R115	R410
Chin	R115	R410
Brows + Lip	R195	R630
Brows + Chin	R195	R630
Lip + Chin	R195	R630
Brows + Lip + Chin	R280	R940
Full Face	R300	R1150

Stomach

Stomach		R160
---------	--	-------------

NEW

V Facials*

	Warm	Cool
Brightening	R380	R380
Ingrown	R380	R380

NEW

Combos

(Combos to be redeemed on the same day)

Full leg + Hollywood + Full Face + Underarm	R1030
Half Leg + Hollywood + Brow & Lip + Full Arm	R830
Full Leg + Underarm + Hollywood + Brows	R865
Half Leg + Underarm + Hollywood + Brows	R800
Full Leg + Brazilian + Underarm	R720
Half Leg + Brazilian + Underarm	R655
Full Leg + Brazilian + Underarm + Brows	R825
Half Leg + Brazilian + Underarm + Brows	R760

relaxed massages



Swedish

Back + Neck (30min) **R390**

Full Body (60min) **R555**

Relaxing Hand or Foot (30min) **R260**

Aromatherapy

Full Body (60min) **R620**

Hot Stone Massage

Back + Neck (30min) **R395**

Full Body (60min) **R625**

eyebrows
and lashes




Threading

Brows	R125
Brows + Lip	R210
Brows + Chin	R210
Brows + Lip + Chin	R290
Full Face	R295

Brow Lamination

Brow Lamination	R475
Brow Lamination + Wax + Tint	R640

Eyelash Extensions

Full Set	R790
Half Set or Fill	R500
Volume Lashes Full Set	R980
Volume Lashes Half Set or Fill	R680
Full Set Mixed (hybrid-volume + standard lashes)	R900
Half Set or Fill Mixed (hybrid-volume + standard lashes)	R600
Removal	R180
 Removal + Full Set	R875

Lash Lift

Lash Lift	R475
Lash Lift with Tint	R545
Lash Lift with Brow + Lash Tint	R585

Tinting

Brows	R120
Lashes	R130

combos

Brows & Lashes

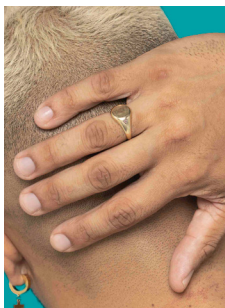
Brow Wax + Tint	R210
Brow Wax + Tint + Lash Tint	R300
Brow Threading + Tint	R225
Brow + Lash Tint	R215

Make-up*

Including brows, eyes, face + lips	R400
------------------------------------	------

* Available at selected stores

mens grooming



Waxing

Ear or Nose or Brows	R115
Ear + Nose	R195
Stomach	R350
Back	R410
Chest	R400
Half Leg	R250
Full Leg	R370
Full Arm	R280
Back, Chest + Stomach	R910
Underarm	R250

Gents Hands & Feet

Quick Manicure: Clip, File + Buff Only	R185
Power Mani: Soak + Exfoliate + Clip + Buff + Massage	R260
Quick Pedicure: Clip, File + Buff Only	R195
Power Pedi: Soak + Exfoliate + Clip + Buff + Massage	R335
Gel Polish (No Colour)	R305

* Available at selected stores

Join Our Loyalty Programme



Up to 50% off on your Birthday*



Awesome promotions



Earn rewards

DOWNLOAD

APP



GET IT ON
Google Play

Download on the
App Store

MENU



SCAN ME

OUR PROMISE

If you are not totally satisfied with your treatment, you don't have to pay. We are only happy when you are.

Ts & Cs Apply.

CONTACT US:

JHB Support Office 011 202 7940

KZN Support Office 031 010 0059

CPT Support Office 021 434 3902

FOLLOW US:

   @sorbetgroup

 www.sorbet.co.za