



sorbet

menu

nails





## Soft Gel Tips



Soft Gel Tips + Gelish	<b>R570</b>
Soft Gel Tips + Gelish with backfill	<b>R490</b>

## Gel Polish



	<b>Hands</b>	<b>Feet</b>
Gel Polish (hands & feet only)	<b>R345</b>	<b>R345</b>
Gel Polish with Ombre	<b>R345</b>	
Gel Polish Mini	<b>R440</b>	<b>R460</b>
Gel Polish Power	<b>R520</b>	<b>R540</b>

## Gel Polish Combos

(combos to be redeemed on the same day)

Gel Polish Hands + Gel Polish Feet + 2 Soak Offs (SAVE R40)	<b>R780</b>
Gel Polish Hands + Gel Polish Power Pedi + Soak Off + 1 FREE Soak Off	<b>R945</b>
Gel Polish Power Mani + Gel Polish Power Pedi + 2 FREE Soak Offs	<b>R1060</b>

## Manicures & Pedicures

	<b>Hands</b>	<b>Feet</b>
Quick - file, buff + paint	<b>R195</b>	<b>R210</b>
Mini - soak, file, buff + paint	<b>R295</b>	<b>R310</b>
Power - soak, file, buff, paint, exfoliation & massage	<b>R365</b>	<b>R385</b>
No Paint Power - excludes polish	<b>R265</b>	<b>R335</b>
Summer Heel - excludes pedicure*		<b>R220</b>
12 years and under	<b>R120</b>	<b>R135</b>

### Anti-Ageing

A scientifically formulated, advanced anti-ageing manicure and pedicure. Utilising products that are packed with growth factors and other pharmaceutical grade ingredients to ensure long lasting and effective results.

Anti-Age	<b>R450</b>	<b>R495</b>
Anti-Age + Gel Polish	<b>R595</b>	<b>R645</b>



### MediPedi

A non-invasive advanced paramedical foot treatment to soften callouses, corns, cracked heels or rough dry skin on the feet.

MediPedi No Paint	<b>R590</b>
MediPedi + Paint	<b>R710</b>
MediPedi + Gelish	<b>R795</b>
MediPedi + EVO	<b>R795</b>



\* Available at selected stores

## Harmony Acrylic

### TIPS

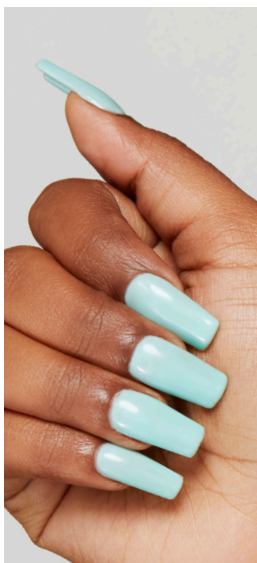
+ Colour	R520
+ Ombre	R550
+ Gel Polish	R570
+ Gel Polish with Ombre	R600

### OVERLAY

+ Natural / Colour	R470
+ Ombre	R490
+ Gel Polish	R520

### FILL & BUFF

+ Natural	R360
+ Polish	R380
+ Ombre	R390
+ Gel Polish	R430

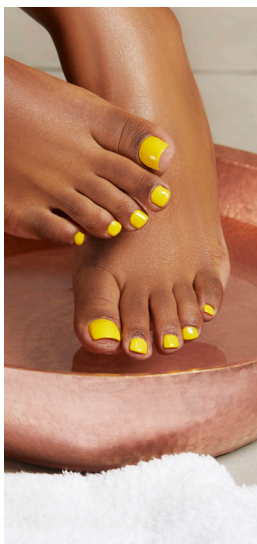


## Sculptured Nails\*

+ Colour	R580
+ Gel Polish	R610

### FILL & BUFF

+ Natural	R390
+ Ombre	R420
+ Gel Polish	R450



## Biogel by Bio Sculpture

### BIOGEL

+ Hands Only	R435
+ Mini Mani	R570
+ Power Mani	R620
+ Feet Only	R435
+ Power Pedi	R630

### TIPS

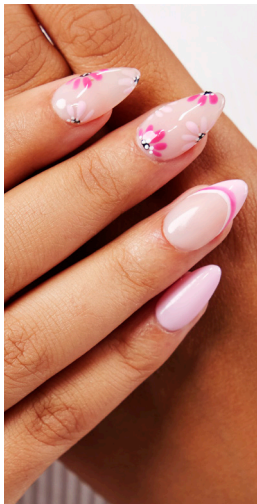
+ Gel Polish	R590
--------------	------

### OVERLAY

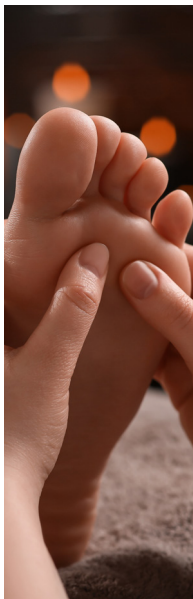
+ Polish	R495
+ Gel Polish	R540

### FILL & BUFF

+ Polish	R385
+ Natural	R365
+ Gel Polish	R425



\* Available at selected stores



## Polygel

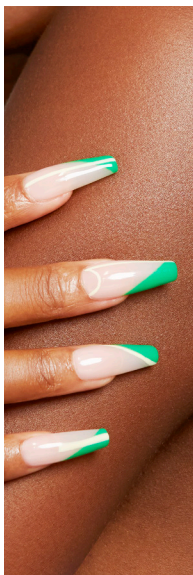
### With Gel Polish

+ Tips	R640
+ Overlay	R585
+ Fill & Buff	R510
+ Sculptured	R670

## Soak Offs & Removals

(when doing a new set or reapplication)

Gel Polish	E-file	Acrylic	Biogel	Polygel	Gelish Soft Gel
R65	R65	R80	R75	R75	R75
				No Paint	Paint (incl)
Soak Off Gel Polish with Quick Mani				R140	R240
Soak Off Acrylic with Quick Mani				R160	R250
Soak Off Polygel with Quick Mani				R160	R250



## Nail Rehab

### IBX

+ Nail Repair	R140
+ Soak Off	R200

## Nail Add Ons & Repairs

### Nail Repair

+ Gel Polish	R45
+ Biogel	R45
+ Acrylic	R55
+ Polygel	R55
+ Soft Gel Tips	R55

### Paraffin Dip

+ Hands or Feet	R160
-----------------	------

### Add On

+ French Paint	R45
+ Rubber Base*	R30
+ Brush-On Builder	R50
+ Summer Heel Express*	R160
<b>NEW</b> + Chrome Full Set	R220

## Nail Art\*

Nail Art (per nail) using Gelish Blooming Gel	R15
Nail Art Basic (per nail)	R15
Nail Art Sticker (per nail)	R25
Nail Art - Chrome or Rhinestone (per nail)	R25
Paint On Nail Art (per nail)	R35



\* Available at selected stores

A close-up, low-angle portrait of a woman with a warm, golden-brown complexion. She is looking upwards and to the right with a soft, serene expression. Her skin is smooth and has a natural-looking glow. A solid teal vertical bar runs along the left edge of the frame. The background is a plain, light grey. At the bottom, the word "skin" is written in a large, semi-transparent, sans-serif font, and the word "treatments" is written in a white, elegant script font over it.

*skin*  
treatments

## dermalogica

dermalogica®

30min

60min

### FREE Face Mapping (15 min)

A professional, in-depth skin analysis based on your skin and lifestyle.

### Discover Dermalogica

R580

A 30-minute treatment to brighten and hydrate the skin.

### Sorbet Exclusive

R890

Treatment includes an advanced exfoliation, a vitamin mask and a 10-minute full back and shoulder massage.

### TARGETED TREATMENTS:

Best results when booked as a programme of 3 to 6 treatments.

### Pro Bright

R950

Treats dark spots, melasma and sun damage.

### Pro Clear

R950

Treats breakout-prone skin and oily/congested skin.

### Pro Firm

R950

Treatment includes skin resurfacing and advanced techniques to firm and tone.

### Pro Calm

R950

Hydrate, balance and restore the skin to treat skin irritation and reduce sensitivity.

Add on

### Retinol Accelerator (10 min)

R150

Boosts the skin renewal process for enhanced results.

### PEELS:

30min

60min

### Ultra Bright Peel

R770

30-minute fast-acting peel targeting hyperpigmentation.

### Power Clear Peel

R770

30-minute fast-acting peel targeting breakout-prone skin.

### Advanced Renewal Peel

R770

30-minute fast-acting peel targeting ageing.

### ADVANCED TREATMENT:

### Dermalogica Pro Microneedling

R1800

A minimally invasive treatment to treat dark spots, wrinkles, and enlarged pores.

## DMK\*

DMK

Danné Montague-King®

DMK Advanced Paramedical Skin Revision protocols and peels to encourage optimum results.

60min

90min

### Hydrating Infusion Treatment

R610

Increase hydration for a healthy, brighter complexion.

### Acu Klenz Treatment

R650

A purifying treatment for a clearer complexion.

### PEELS:

### DMK Oxygen Glow Enzyme Treatment

R1030

Great for acne, ageing and pigmentation.

### Rapid Exfoliation Enzyme Treatment

R815

Improves the appearance of dull skin for a radiant complexion.

\* Available at selected stores

## ENVIRON



### Essential Vitamin Touch (without DF machine)

Delivers essential vitamins to the skin for a healthy-looking complexion.

45min  
R570

60min  
R760

Without DF machine

With DF machine\*

### Focus On: Frown, Eye, Texture, Even Tone & Filler

30-minute treatment to focus on targeted skin concerns.

R490

### Essential Youth Reset

Helps soften the appearance of fine lines, sun damage & sagging skin, for a more youthful appearance.

R750

R850

### Essential Moisture Boost

Helps reduce the appearance of fine lines caused by dehydration and promotes a more moisturised glow.

R750

R850

### Essential Comfort Calm

Helps soothe and comfort sensitive and irritated skin, leaving the skin feeling restored and radiant.

R750

R850

### Essential Radiance Reveal

Helps target the signs of sun-damage and pigmentation for an even-toned, radiant-looking appearance.

R750

R850

### COOL PEELS:

Without DF machine

With DF machine\*

### Bright Recovery Cool Peel (60min)

A lactic acid cool peel that targets ageing, fine lines and uneven skin tone.

R940

### Deep Cleansing Cool Peel (60min)

Purifies the skin to control congestion and breakouts.

R820

### Youth Renew Cool Peel (60min)

Treats premature ageing, fine lines, sun-damage and uneven skin tone.

R620

R760

### Blemish Control Cool Peel (60min)

Improves the appearance of blemish-prone and distressed skin.

R620

R760

### Vibrant-C Micro Peel

A concentrated Vitamin C infused peel. Proven to deliver a healthy-looking, evenly toned appearance as well as improved skin texture.

R595

R760

## Exuviance



## Powered by NeoStrata\*

60min

### Hydrating Treatment

Experience the ultimate hydration boost for your skin with our specially formulated product. This unique formula is designed to restore your skin's natural hydration levels, replenish moisture, and provide deep nourishment. The result is a smoother, plumper, and more radiant appearance.

R950

### PEELS:

### Calming Treatment and Peel

Indulge in a soothing facial peel that delicately exfoliates your skin, unveiling a more luminous and velvety complexion. This gentle peel effectively eliminates dead skin cells and unclogs pores, promoting a clearer and healthier appearance. Plus, it offers a tranquil and rejuvenating experience for ultimate relaxation.

R950

### Revitalising Treatment and Peel

Discover a highly effective method to revitalize and renew your skin by gently exfoliating away dead skin cells, resulting in improved skin texture and a radiant, youthful complexion. Our product features a gentle yet powerful formula that is suitable for all skin types, ensuring that everyone can enjoy its benefits.

R1050

### Brightening Treatment and Retinol Peel

Experience the transformative power of our advanced professional strength peel, meticulously crafted to exfoliate and enhance the look of fine lines and wrinkles. This remarkable formula also works to plump and firm the skin, leaving you with a luminous, even-toned complexion that radiates clarity. Enriched with soothing ingredients, it provides a calming effect, ensuring your skin feels nurtured and revitalized.

R1450

\* Available at selected stores



## Sorbet\*



	30min	60min
<b>Sorbet Anti-Ageing Treatment</b>		<b>R525</b>
Rejuvenating treatment that promotes collagen production and increases cellular turnover, providing effective results to slow down the ageing process.		
<b>Sorbet Deep Cleanse &amp; Hydration Treatment</b>	<b>R425</b>	
Deep cleansing and purifying treatment that unclogs pores to reveal a clearer complexion, while restoring moisture levels.		
<b>Sorbet Brightening Treatment</b>		<b>R565</b>
Improves skin radiance and reduces pigmentation. Includes a Dermaplaning treatment.		



## Dermapenworld\*

Dermapenworld™

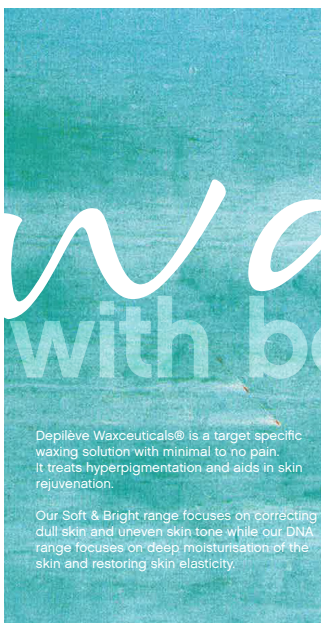
This is a treatment that involves the use of a microneedling device, to create controlled micro-injuries on the skin. This treatment enhances the texture of the skin by promoting scarless healing and stimulating collagen production in the treated area.

Face (only)	<b>R1600</b>	
Face + Neck	<b>R1750</b>	
Face + Neck + Decolleté	<b>R1900</b>	
		<b>Add on</b>
Uber Peel Pro		<b>R370</b>

## Dermaplaning\*

		<b>Add on</b>
<b>Dermaplaning (only)</b>	<b>R520</b>	<b>R400</b>
Dermaplaning exfoliates the skin and removes facial hair, using a surgical blade.		

\* Available at selected stores





## Legs

Epilfree\*

Half Leg	R245	R1170
Three Quarter Leg	R265	R1520
Full Leg	R315	R2170

## Intimate

Epilfree\*

Bikini	R200	R680
Brazilian	R295	R1150
Hollywood	R340	R1320

## Arms

Epilfree\*

Underarm	R170	R570
Half Arm	R195	R770
Full Arm	R255	R1395

## Face (hot wax)

Epilfree\*

Brows	R115	R410
Lip	R115	R410
Chin	R115	R410
Brows + Lip	R195	R630
Brows + Chin	R195	R630
Lip + Chin	R195	R630
Brows + Lip + Chin	R280	R940
Full Face	R300	R1150

## Stomach

Stomach	R160
---------	------

NEW

## V Facials\*

Warm

Cool

Brightening	R380	R380
Ingrown	R380	R380

NEW

## Combos

(combos to be redeemed on the same day)

Full Leg + Hollywood + Underarm + Full Face	R1030
Half Leg + Hollywood + Full Arm + Brow + Lip	R830
Full Leg + Hollywood + Underarm + Brows	R865
Half Leg + Hollywood + Underarm + Brows	R800
Full Leg + Brazilian + Underarm	R720
Half Leg + Brazilian + Underarm	R655
Full Leg + Brazilian + Underarm + Brows	R825
Half Leg + Brazilian + Underarm + Brows	R760

\* Available at selected stores

# relaxed massages



## Swedish

Back + Neck (30 min)	R390
Full Body (60 min)	R555
Relaxing Hand or Foot (30 min)	R260

## Aromatherapy

Full Body (60 min)	R620
--------------------	------

## Hot Stone Massage

Back + Neck (30 min)	R395
Full Body (60 min)	R625





and lashes



## Threading

Brows	R125
Brows + Lip	R210
Brows + Chin	R210
Brows + Lip + Chin	R290
Full Face	R295

## Brow Lamination

Brow Lamination	R475
Brow Lamination + Wax + Tint	R640

## Eyelash Extensions

Full Set	R790
Half Set or Fill	R500
Volume Lashes Full Set	R980
Volume Lashes Half Set or Fill	R680
Full Set Mixed (hybrid-volume + standard lashes)	R900
Half Set or Fill Mixed (hybrid-volume + standard lashes)	R600
Removal	R180
<b>NEW</b> Removal + Full Set	R875

## Lash Lift

Lash Lift	R475
Lash Lift with Tint	R545
Lash Lift with Brow + Lash Tint	R585

## Tinting

Brows	R120
Lashes	R130

## combos

### Brows & Lashes

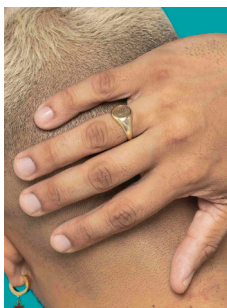
Brow Wax + Tint	R210
Brow Wax + Tint + Lash Tint	R300
Brow Threading + Tint	R225
Brow + Lash Tint	R215

### Make-up\*

Including brows, eyes, face + lips	R400
------------------------------------	------

\* Available at selected stores

# mens grooming



## Gents Waxing

Ear or Nose or Brows	R115
Ear + Nose	R195
Stomach	R350
Back	R410
Chest	R400
Half Leg	R250
Full Leg	R370
Full Arm	R280
Back + Chest + Stomach	R910
Underarm	R250

## Gents Hands & Feet

Quick Manicure - clip, file & buff only	R185
Power Mani - soak, exfoliate, clip, buff & massage	R260
Quick Pedicure - clip, file & buff only	R195
Power Pedi - soak, exfoliate, clip, buff & massage	R335
Gel Polish (no colour)	R305

\* Available at selected stores



# loyalty loyalty

## Join Our Loyalty Programme

 Up to 50% off on your Birthday\*

 Awesome promotions

 Earn rewards

### DOWNLOAD

#### APP



#### MENU



SCAN ME

### OUR PROMISE

If you are not totally satisfied with your treatment, you don't have to pay. We are only happy when you are.

Ts & Cs Apply.

#### CONTACT US:

JHB Support Office 011 202 7940  
KZN Support Office 031 010 0059  
CPT Support Office 021 434 3902

#### FOLLOW US:

   @sorbetgroup  
 [www.sorbet.co.za](http://www.sorbet.co.za)